



Halloween Black Cat Basket

Technique:	Sewing, Fabric Crafting
Designed By:	Linda Turner Griepentrog
Skill Level:	Intermediate
Crafting Time:	An evening
Finished size:	6" (15.24cm) (at base) x 3½" x 5" (8.89cm x 12.70cm) (exclusive of ears)

Featuring Coats Dual Duty XP®

Whether you fill it with candy corn or pre-wrapped treats, this fun Halloween cat basket is ideal for a party table decoration or meeting trick-or-treaters at the door.

Supplies

- Coats Dual Duty XP® All-Purpose thread
- ½ yd (45.72cm) black on black print
- ½ yd (45.72cm) black/white polka dot for lining
- 4" x 8" (10.16cm x 20.32cm) scrap yellow print for ear lining
- ½ yd (45.72cm) medium-weight fusible interfacing
- ½ yd (45.72cm) stiff craft interfacing
- ½"(1.27cm) pink pompom
- 2 cat eyes, 15mm
- 3 white chenille sticks
- Fabric glue
- Pattern tracing paper

Cutting

Trace the patterns onto the pattern tracing paper.

From the black print, cut:

- (1) Basket
- (2) Ears
- (1) Tail, 1½" x 10" (3.81cm x 25.40cm)

From the polka dot, cut:

- (1) Basket

From the yellow scrap, cut:

- (2) Ears

From the fusible interfacing, cut:

- (1) Basket
- (2) Ears

From the stiff craft interfacing, cut:

- (1) Basket

Preparing the Pieces

1. Fuse the interfacing to the polka dot basket and to the black print ears.
2. Baste the stiff craft interfacing to the black print basket ¼" (.64cm) from the edges. Mark the basket center line.

Sewing the Tail

1. Sew the long edges of the tail together using a ¼" (.64cm) seam and tapering to a point at one end. Trim the seam, and turn right side out. Press with the seam along one edge.
2. Baste the tail to one basket side seam 2" (5.08cm) from the lower edge.

Assembling the Basket

Seam allowance is ½" (1.27cm), unless otherwise noted.

1. With right sides together and keeping the loose tail end out of the way, sew the side seams in the black print basket. Press open.
2. To box the corners, fold the basket lower edge right sides together with the side seam centered. Sew across, and repeat for the second corner. Trim the seam allowances to ¼" (.64cm).
3. Repeat steps 1 and 2 for the polka dot basket lining.

Assembling the Ears

1. Matching one yellow print ear and one black print ear right sides together, stitch around the curved edge using a ¼" (.64cm) seam; leave the straight lower edge open. Repeat for the second ear. Trim the seam allowances and turn the ears right side out. Press.
2. Fold the lower ear into a pleat so the finished width is 1½" (3.81cm). Fold the second ear in the same manner, so you'll have a left and right ear with opposite pleats.
3. With the basket right side out and raw edges matching, pin the ears in place on the basket front 1½" (3.81cm) from the upper edge center; the yellow side should be against the basket right side and pleats should fold toward the center. Baste ¼" (.64cm) from the edge.

Inserting the Eyes

1. Mark the eye placement 1" (2.54cm) from the upper basket center and 2¼" (5.72cm) down from the basket upper cut edge.
2. Using sharp pointed scissors, poke a small hole for each eye and insert the eye stem. Back the eye area with a small rectangle of stiff craft interfacing for stability and poke the eye stems through it.
3. Snap on the eye backs firmly and rotate the eyes to the desired angle.

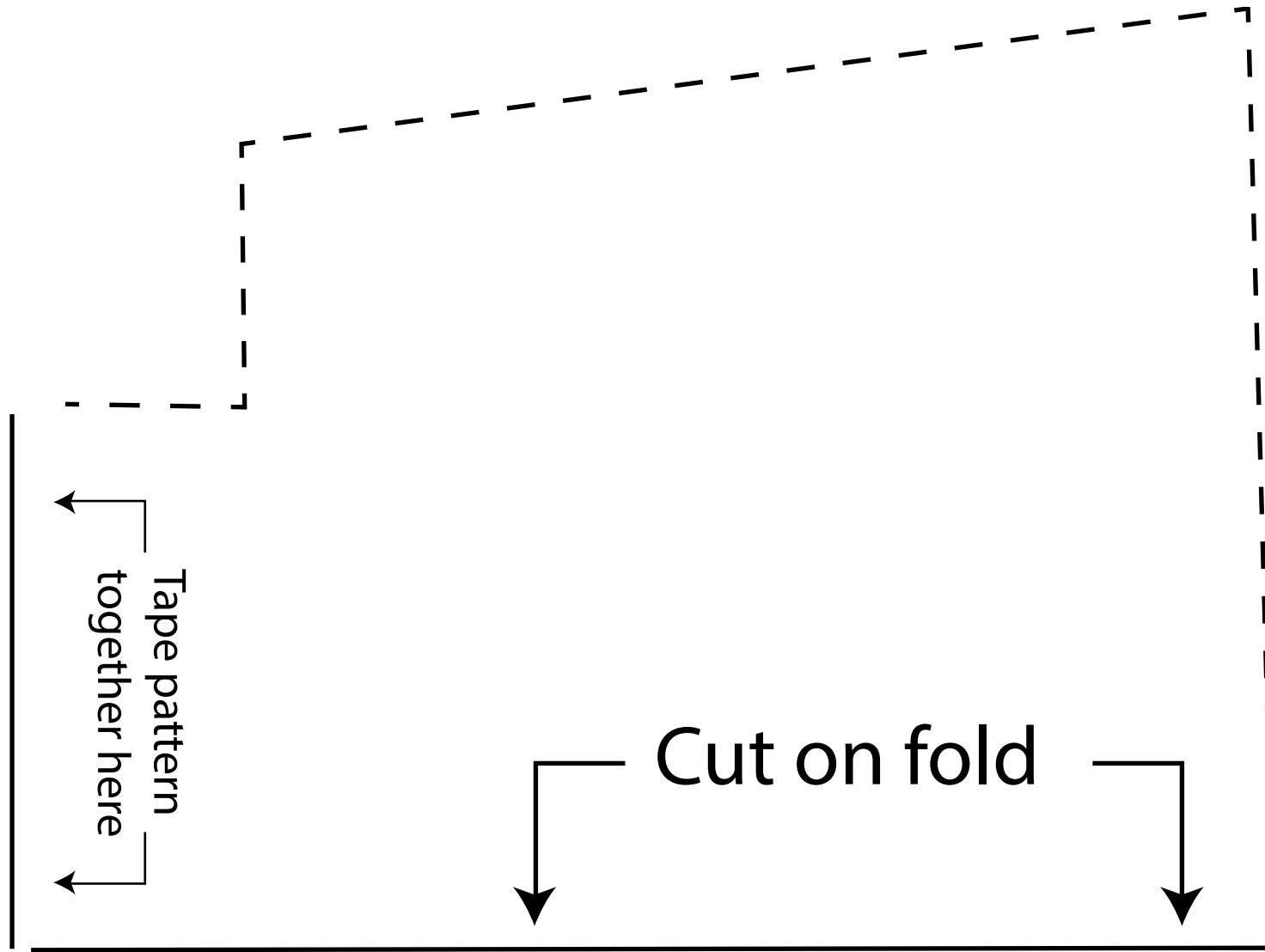
Joining the Baskets

1. Press under ½" (1.27cm) around the top of the outer black basket and the polka dot basket liner.
2. With wrong sides together, slip the lining into the basket and pin the upper folds together. Stitch ⅛" (.32cm) around the upper basket, catching the upright ears between the layers.

Finishing the Basket

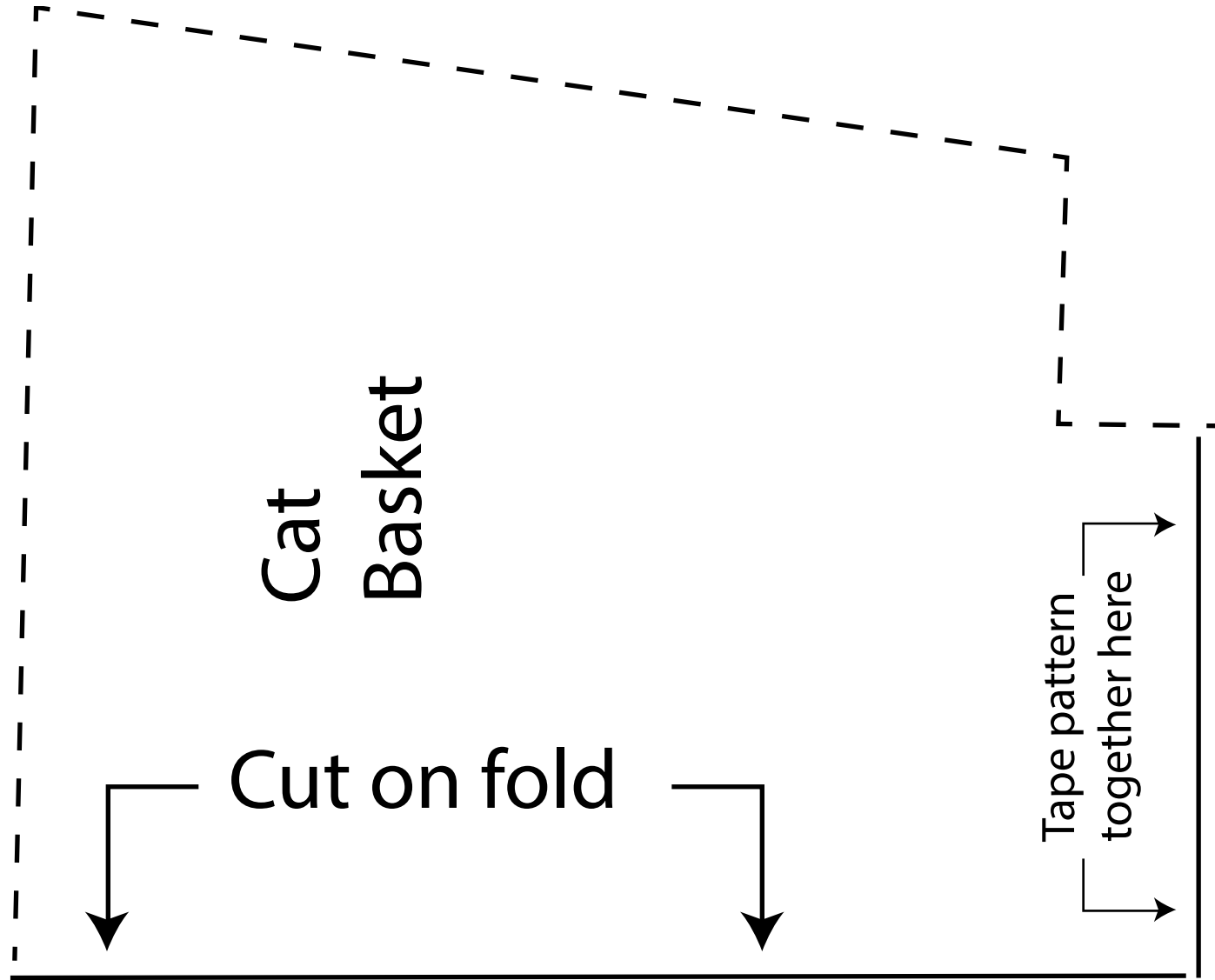
1. Trim the chenille sticks to 9" (22.86cm) long.
2. Whipstitch the center of the chenille sticks to the basket front center below the eyes.
3. Trim the pompom to a triangle shape and glue it over the center of the chenille stick stitching to make the nose.

Halloween Black Cat Basket



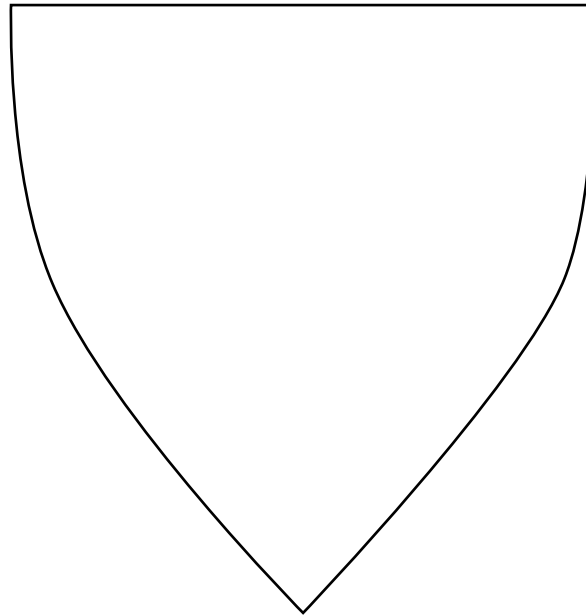
This square should measure 1" x 1" (2.54cm x 2.54cm) when printed.

*** Measure templates before cutting to confirm printing at 100%***



This square should
measure 1" x 1"
(2.54cm x 2.54cm)
when printed.

*** Measure templates before cutting to confirm printing at 100%***



This square should
measure 1" x 1"
(2.54cm x 2.54cm)
when printed.

*** Measure templates before cutting to confirm printing at 100%***